

CONTROL-KNOBS

Potentiometer tuning knobs that are highly comfortable to operate

New ergonomic CONTROL-KNOBS have a soft-touch surface which is easy to grip and feels comfortable in operation. The high-quality appearance – illuminated if required – distinguishes this advanced range of tuning knobs as the central element of menu-driven interfaces.

- soft-touch surface ensures good grip and anti-slip operation
- innovative two-part plastic tuning knob design comprises a hard inner knob body made of high-quality PC and a soft-touch TPE outer shell with functional grooved appearance *** **iF product design award 2022** ***
- available in two knob sizes, ø 36 mm and ø 46 mm, each in two standard TPE colours (nero and volcano)
- CONTROL-KNOBS with/without pointer line on the side for fine scaling
- CONTROL-KNOBS with/without optional LED illumination
- illumination options:
 - translucent optic ring on the top surface
 - translucent optic ring on the top surface with a pointer line on the side
 (note: order the CONTROL-KNOBS with optional illumination, plus the base and the LED illumination kit, see accessories)
- optional illumination uses modern, energy-saving SMD LED technology for 5 V power supply units (RGB LEDs allow individual illumination and colours)
- designed as modern control knobs for rotary potentiometers or encoders; also suitable for rotary touch/click functions used on menu-driven interfaces – typically employed on devices made in high volumes
- tried and tested collet fixture system with secure fit on the axle
- max. torque: installation = 1.5 Nm, function = 1.2 Nm

knob sizes	boreholes
ø 36 mm	6 mm, 1/4" (6.35 mm)
ø 46 mm	6 mm, 1/4" (6.35 mm)

Minimum components for one CONTROL-KNOBS, without illumination:

1 CONTROL-KNOBS, 1 cover – the accessory base can also be added if required

Minimum components for one CONTROL-KNOBS with LED illumination:

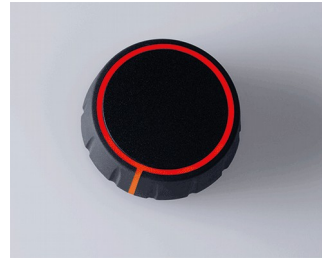
1 CONTROL-KNOBS, optional illumination, 1 cover, 1 base, 1 LED illumination kit (RGB backlight)

Designer Statement

"Perfect all round – modern tuning knobs which are pleasant to the touch, with which processes can be reliably regulated or controlled and which should have a fixed place in the user interface of a modern product. When it comes down to it, these tuning knobs can ensure easy operation of your products even in awkward places and under adverse conditions – robust in appearance and precise in their function. You will find the CONTROL-KNOBS easy to use. The illuminated lines indicate the location, status and position of the function you are looking for. With or without gloves, the haptic structure and the pleasant material of the grip surface reliably apply the necessary torque to the knob axle – in any application situation."

Martin Nußberger, polyform Industrie Design

CONTROL-KNOBS



CONTROL-KNOBS

Applications and Examples

For rotary potentiometers or rotary encoders with round shaft ends in accordance with DIN 41591, including touch function.

- Measuring and control technology
- Medical and laboratory equipment
- Wellness sector
- Health care
- Heating and air conditioning technology
- Communication devices
- Building control systems
- Smart Factory



Assistance system for the home



Camera control in production



Find compressed air leaks using ultrasound



Measured value display device



Operating elements for machine control



Solar Control Panel

Customising Options

What do you still need for your own very personal product? We can supply enclosures and tuning knobs with all necessary modifications for fitting your electronic components.

Customising options for Control-Knobs



Machining



Printing



Laser marking



Installation / Assembly of accessories

CONTROL-KNOBS

Select Versions



B7136061
 CONTROL-KNOBS 36, optional
 illumination
 PC
 nero
 36x14.7mm 6mm



B7136062
 CONTROL-KNOBS 36
 PC
 nero
 36x14.7mm 6mm



B7136063
 CONTROL-KNOBS 36, optional
 illumination
 PC
 volcano
 36x14.7mm 6mm



B7136064
 CONTROL-KNOBS 36
 PC
 volcano
 36x14.7mm 6mm



B7136631
 CONTROL-KNOBS 36, optional
 illumination
 PC
 nero
 36x14.7mm 1/4"



B7136632
 CONTROL-KNOBS 36
 PC
 nero
 36x14.7mm 1/4"



B7136633
 CONTROL-KNOBS 36, optional
 illumination
 PC
 volcano
 36x14.7mm 1/4"



B7136634
 CONTROL-KNOBS 36
 PC
 volcano
 36x14.7mm 1/4"



B7146061
 CONTROL-KNOBS 46, optional
 illumination
 PC
 nero
 46x14.7mm 6mm



B7146062
 CONTROL-KNOBS 46
 PC
 nero
 46x14.7mm 6mm



B7146063
 CONTROL-KNOBS 46, optional
 illumination
 PC
 volcano
 46x14.7mm 6mm



B7146064
 CONTROL-KNOBS 46
 PC
 volcano
 46x14.7mm 6mm

CONTROL-KNOBS



B7146631
CONTROL-KNOBS 46, optional
illumination
PC
nero
46x14.7mm 1/4"



B7146632
CONTROL-KNOBS 46
PC
nero
46x14.7mm 1/4"



B7146633
CONTROL-KNOBS 46, optional
illumination
PC
volcano
46x14.7mm 1/4"



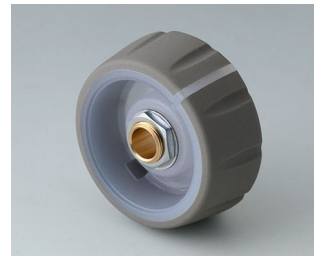
B7146634
CONTROL-KNOBS 46
PC
volcano
46x14.7mm 1/4"



B7236061
CONTROL-KNOBS 36, optional
illumination
PC
nero
36x14.7mm 6mm



B7236062
CONTROL-KNOBS 36
PC
nero
36x14.7mm 6mm



B7236063
CONTROL-KNOBS 36, optional
illumination
PC
volcano
36x14.7mm 6mm



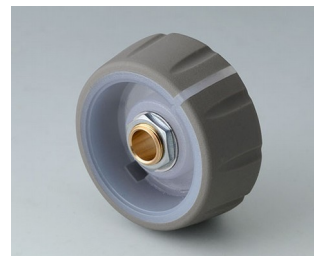
B7236064
CONTROL-KNOBS 36
PC
volcano
36x14.7mm 6mm



B7236631
CONTROL-KNOBS 36, optional
illumination
PC
nero
36x14.7mm 1/4"



B7236632
CONTROL-KNOBS 36
PC
nero
36x14.7mm 1/4"



B7236633
CONTROL-KNOBS 36, optional
illumination
PC
volcano
36x14.7mm 1/4"



B7236634
CONTROL-KNOBS 36
PC
volcano
36x14.7mm 1/4"



B7246061
CONTROL-KNOBS 46, optional
illumination
PC
nero
46x14.7mm 6mm



B7246062
CONTROL-KNOBS 46
PC
nero
46x14.7mm 6mm



B7246063
CONTROL-KNOBS 46, optional
illumination
PC
volcano
46x14.7mm 6mm



B7246064
CONTROL-KNOBS 46
PC
volcano
46x14.7mm 6mm

CONTROL-KNOBS



B7246631
CONTROL-KNOBS 46, optional
illumination
PC
nero
46x14.7mm 1/4"



B7246632
CONTROL-KNOBS 46
PC
nero
46x14.7mm 1/4"



B7246633
CONTROL-KNOBS 46, optional
illumination
PC
volcano
46x14.7mm 1/4"



B7246634
CONTROL-KNOBS 46
PC
volcano
46x14.7mm 1/4"

Accessory "screws"



A6207009
Round nut M7 x 0.75



A6210009
Round nut M10 x 0.75

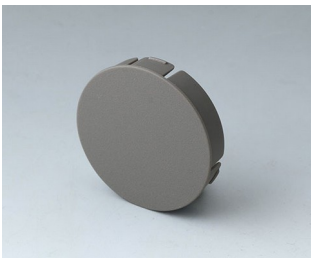


A6295009
Round nut 3/8"-32G



A6300000
Spanner

Accessory



B7536108
Cover 36
PA 6
volcano



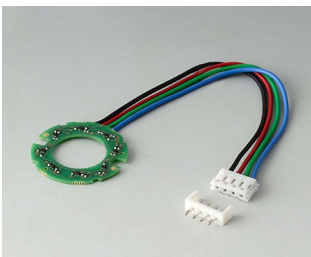
B7536109
Cover 36
PA 6
nero



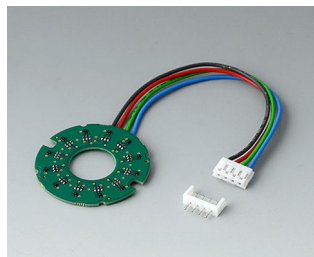
B7536208
Base 36
PA 6
volcano



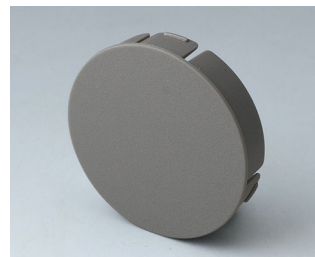
B7536209
Base 36
PA 6
nero



B7546001
LED illumination kit, 8 LEDs
(RGB backlight)



B7546002
LED illumination kit, 12 LEDs
(RGB backlight)

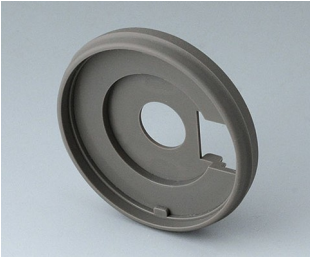


B7546108
Cover 46
PA 6
volcano

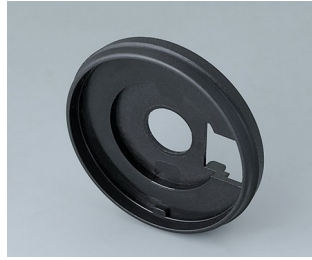


B7546109
Cover 46
PA 6
nero

CONTROL-KNOBS



B7546208
Base 46
PA 6
volcano



B7546209
Base 46
PA 6
nero

Subject to technical modification without notice. © by OKW Gehäusesysteme, Buchen/Germany.