

# ART-CASE

## Uniquely styled electronic enclosures

The ART-CASE plastic enclosures series sets new standards for design and function with four uniquely contoured shapes: "round", "square", "oval" and "edge"

- attractive eye-catching design for indoor electronics used in the living and working environments
- four designs in two standard colours
- huge range of possible combinations for mobile, desktop, wall or ceiling mounted applications
- order the basic case then select either a bottom lid or base section
- top convex (H) or flat with recessed area (F)
- lid screw fitted to the bottom
- base 30° or 55° inclined for user-friendly installation and assembly angles
- base level spacer for ceiling/wall mounting, incl. supports 2 x AA and strain relief
- Euro plug module according DIN VDE 0620 part 101
- battery compartment for 2 x AAA cells (accessory)
- protection class IP 40
- internal fastening pillars for PCBs etc.



# ART-CASE

## Applications and Examples

Ideal indoor electrical and electronic applications, e.g.

- Transmission and reception units in building services management systems and building installations
- Medical technology, health care
- Computer peripherals
- Security technology
- Sensors, optoelectronics



3D angle measurement of articulation systems on a gravity basis



Access management in care facilities



CO2 sensor traffic light



Multiple analytical resonance system



Radio paging mushroom-type button



RFID Reader for the CTV system



VIVOBASE HOME

## Customising Options

What do you still need for your own very personal product? We can supply enclosures and tuning knobs with all necessary modifications for fitting your electronic components.

Customising options for Art-Case



Machining



Lacquering



Printing



Laser marking



Decor foils



Special material



EMC shielding



Installation / Assembly of accessories

# ART-CASE

## Select Versions



**B5010007**  
Bottom and top part R110 F  
ABS (UL 94 HB)  
off-white RAL 9002  
ø110x30mm



**B5010009**  
Bottom and top part R110 F  
ABS (UL 94 HB)  
black RAL 9005  
ø110x30mm



**B5010107**  
Bottom and top part R110 H  
ABS (UL 94 HB)  
off-white RAL 9002  
ø110x38mm



**B5010109**  
Bottom and top part R110 H  
ABS (UL 94 HB)  
black RAL 9005  
ø110x38mm



**B5010207**  
Bottom and top part R110 F  
ABS (UL 94 HB)  
off-white RAL 9002  
ø110x38mm



**B5010209**  
Bottom and top part R110 F  
ABS (UL 94 HB)  
black RAL 9005  
ø110x38mm



**B5010307**  
Bottom and top part R110 H  
ABS (UL 94 HB)  
off-white RAL 9002  
ø110x41mm



**B5010309**  
Bottom and top part R110 H  
ABS (UL 94 HB)  
black RAL 9005  
ø110x41mm



**B5011027**  
ART-CASE R110 F  
PC+ABS (UL 94 V-0)  
off-white RAL 9002  
ø110x30mm  
IP 40



**B5011029**  
ART-CASE R110 F  
PC+ABS (UL 94 V-0)  
black RAL 9005  
ø110x30mm  
IP 40



**B5011127**  
ART-CASE R110 H  
PC+ABS (UL 94 V-0)  
off-white RAL 9002  
ø110x38mm  
IP 40



**B5011129**  
ART-CASE R110 H  
PC+ABS (UL 94 V-0)  
black RAL 9005  
ø110x38mm  
IP 40



**B5011227**  
ART-CASE R110 F  
PC+ABS (UL 94 V-0)  
off-white RAL 9002  
ø110x38mm  
IP 40



**B5011229**  
ART-CASE R110 F  
PC+ABS (UL 94 V-0)  
black RAL 9005  
ø110x38mm  
IP 40



**B5011327**  
ART-CASE R110 H  
PC+ABS (UL 94 V-0)  
off-white RAL 9002  
ø110x41mm  
IP 40



**B5011329**  
ART-CASE R110 H  
PC+ABS (UL 94 V-0)  
black RAL 9005  
ø110x41mm  
IP 40

# ART-CASE



**B5012207**  
Bottom and top part S110 F  
ABS (UL 94 HB)  
off-white RAL 9002  
110x110x38mm



**B5012209**  
Bottom and top part S110 F  
ABS (UL 94 HB)  
black RAL 9005  
110x110x38mm



**B5013227**  
ART-CASE S110 F  
PC+ABS (UL 94 V-0)  
off-white RAL 9002  
110x110x38mm  
IP 40



**B5013229**  
ART-CASE S110 F  
PC+ABS (UL 94 V-0)  
black RAL 9005  
110x110x38mm  
IP 40



**B5015007**  
Bottom and top part O160 F  
ABS (UL 94 HB)  
off-white RAL 9002  
160x110x30mm



**B5015009**  
Bottom and top part O160 F  
ABS (UL 94 HB)  
black RAL 9005  
160x110x30mm



**B5015107**  
Bottom and top part O160 H  
ABS (UL 94 HB)  
off-white RAL 9002  
160x110x38mm



**B5015109**  
Bottom and top part O160 H  
ABS (UL 94 HB)  
black RAL 9005  
160x110x38mm



**B5015207**  
Bottom and top part O160 F  
ABS (UL 94 HB)  
off-white RAL 9002  
160x110x38mm



**B5015209**  
Bottom and top part O160 F  
ABS (UL 94 HB)  
black RAL 9005  
160x110x38mm



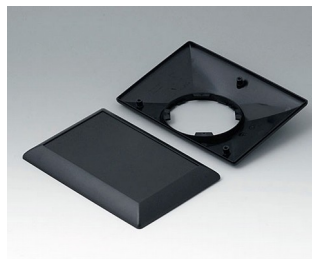
**B5015307**  
Bottom and top part O160 H  
ABS (UL 94 HB)  
off-white RAL 9002  
160x110x41mm



**B5015309**  
Bottom and top part O160 H  
ABS (UL 94 HB)  
black RAL 9005  
160x110x41mm



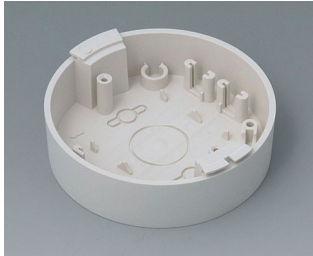
**B5017207**  
Bottom and top part E160 F  
ABS (UL 94 HB)  
off-white RAL 9002  
160x110x38mm



**B5017209**  
Bottom and top part E160 F  
ABS (UL 94 HB)  
black RAL 9005  
160x110x38mm

# ART-CASE

## System components to complete



**B5011117**  
Base  
ABS (UL 94 HB)  
off-white RAL 9002



**B5011119**  
Base  
ABS (UL 94 HB)  
black RAL 9005



**B5011217**  
Base 30°  
ABS (UL 94 HB)  
off-white RAL 9002



**B5011219**  
Base 30°  
ABS (UL 94 HB)  
black RAL 9005



**B5011317**  
Base 55°  
ABS (UL 94 HB)  
off-white RAL 9002



**B5011319**  
Base 55°  
ABS (UL 94 HB)  
black RAL 9005



**B5011847**  
Lid  
ABS (UL 94 HB)  
off-white RAL 9002



**B5011849**  
Lid  
ABS (UL 94 HB)  
black RAL 9005



**B5011857**  
Battery compartment lid  
ABS (UL 94 HB)  
off-white RAL 9002



**B5011859**  
Battery compartment lid  
ABS (UL 94 HB)  
black RAL 9005

## Accessory "battery"



**A9166001**  
Set of battery clips, 2 x AAA  
Steel  
tin-plated



**A9166002**  
Battery contact, 2 x AAA  
Steel  
tin-plated



**A9166003**  
Battery holder, 2 x AAA  
PA 6 (UL 94 HB)  
black RAL 9005



**A9190002**  
Set of battery clips,  
2xN/2xAA/2xAAA  
Steel  
tin-plated

# ART-CASE



**B5111107**  
 Battery compartment, 2 x AAA  
 ABS (UL 94 HB)  
 off-white RAL 9002



**B5111109**  
 Battery compartment, 2 x AAA  
 ABS (UL 94 HB)  
 black RAL 9005

## Accessory "protection"



**A9199005**  
 Strain relief  
 PA 6  
 volcano



**B5111707**  
 Anti-rotation device  
 ABS (UL 94 HB)  
 off-white RAL 9002

## Accessory "wall/holder"



**B5111307**  
 Wall mounting set  
 ABS (UL 94 HB)  
 off-white RAL 9002



**B5111309**  
 Wall mounting set  
 ABS (UL 94 HB)  
 black RAL 9005

## Accessory "screws"



**B5111201**  
 Set of screws

# ART-CASE

## Accessory



A9207150  
Anti-slide feet 6.5 x 2 mm  
transparent

Subject to technical modification without notice. © by OKW Gehäusesysteme, Buchen/Germany.