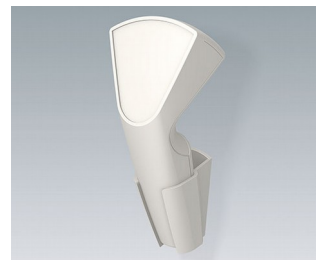


# SENSO-CASE

## Ergonomic plastic enclosures for single-handed operation

Specific measuring, controlling and signaling tasks, as well as the recording of data using opto-electronic components, can be carried out with SENSO-CASE easily, quickly and reliably.

- particularly user-friendly thanks to its hand grip style, both right and left handed
- ideally balanced in the hand for maximum user comfort
- versions with/without push-button in the trigger position on the underside for immediate and/or momentary operation
- recessed control panel for membrane keypads, silicon keyboards, push-buttons and LCDs
- ideal for pre-assembled electronics assemblies, including those with integrated interfaces
- large front face for mounting sensors
- simultaneous operation is possible using standard or rechargeable batteries, or a cable connection
- internal power supply with 2 x AA or 1 x 9 V cells; battery holders as accessories
- version with pre-fitted cable glands, plus strain relief accessory
- four part design: top, base, handle cover, cable gland or removable end panel; further version with additional push-button
- holder for secure wall storage as accessory
- internal fastening pillars for PCBs



# SENSO-CASE

## Applications and Examples

- Sensor technology
- Opto-electronics
- Opto-digital technologies
- Industrial image processing
- Measuring and control technology
- Stock and sales logging
- Medical field and laboratory technology
- Communications



Battery filler for aviation batteries



Geiger counter



One-handed ground microphone



Online PD handheld scanner

## Customising Options

What do you still need for your own very personal product? We can supply enclosures and tuning knobs with all necessary modifications for fitting your electronic components.  
Customising options for Senso-Case



Machining



Lacquering



Printing



Laser marking



Decor foils



Special material



EMC shielding



Installation / Assembly  
of accessories

# SENSO-CASE

## Select Versions



**A9056107**  
SENSO-CASE M  
ABS (UL 94 HB)  
off-white RAL 9002  
180x86x45mm  
IP 41



**A9056108**  
SENSO-CASE M  
ABS (UL 94 HB)  
lava  
180x86x45mm  
IP 41



**A9056207**  
SENSO-CASE M  
ABS (UL 94 HB)  
off-white RAL 9002  
180x86x45mm  
IP 41

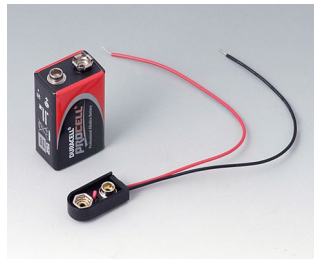


**A9056208**  
SENSO-CASE M  
ABS (UL 94 HB)  
lava  
180x86x45mm  
IP 41

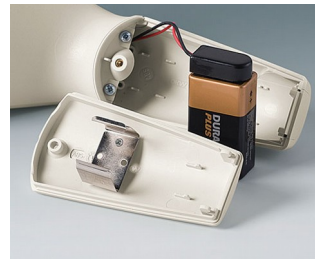
## Accessory "battery"



**A9156001**  
Battery holder, 2 x AA  
PP  
black RAL 9005



**A9156002**  
Plug-in contact, 1 x 9 V (PP3)



**A9156003**  
Battery holder, 1 x 9 V (PP3)  
Steel  
nickel-plated

## Accessory "protection"



**A9166004**  
Set of pull-relief  
PA 6  
volcano



**A9166101**  
Cable strain, 5.0 - 5.9  
SEBS (TPE)  
volcano



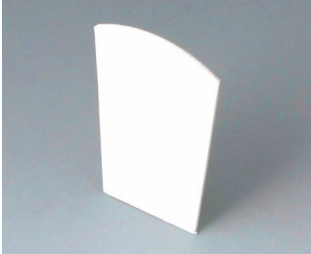
**A9166131**  
Cable strain, 4.2 - 5.0  
SEBS (TPE)  
volcano



**A9166161**  
Cable strain, 3.4 - 4.2  
SEBS (TPE)  
volcano

# SENSO-CASE

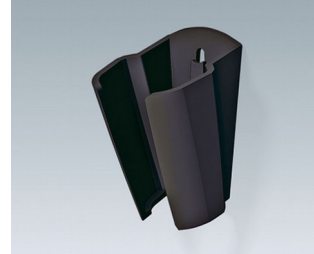
## Accessory "wall/holder"



A9156005  
Adhesive foil



A9156307  
Holder  
ABS (UL 94 HB)  
off-white RAL 9002



A9156308  
Holder  
ABS (UL 94 HB)  
lava

## Accessory "carrying"



A9100002  
Ring eyelet  
PA 6  
volcano

## Accessory "screws"



A0305031  
Self-tapping screws 2.5 x 6 mm  
(PZ1)

Subject to technical modification without notice. © by OKW Gehäusesysteme, Buchen/Germany.