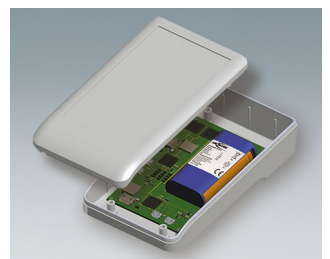


DATEC-COMPACT

Compact handheld plastic enclosures

The new DATEC-COMPACT series of handheld enclosures has a compact and robust design, ideally suited for mobile devices.

- robust, high-quality material ASA+PC-FR for outdoor use
- high protection class IP 65 with sealing for tough environment or protection class IP 41 without sealing as low-priced enclosures for measuring instruments
- 3 sizes, 2 colours
- with / without battery compartment for 1.5 V AAA or AA batteries; three battery cells guarantee reliable 3V power supply
- SD cards/USB connectors can be inserted within the sealed compartment (versions with battery compartment)
- station for easy data and charging current transmission available as accessories
- screw connection with stainless steel screws and Torx drive
- further accessories: set of battery clips and gold-plated contacts



DATEC-COMPACT

Applications and Examples

- Mobile data recording
- Measuring and control technology
- Control technology
- Medical and laboratory technology
- Environmental technology
- Outdoor
- Smart Factory
- Industry 4.0



Atmospheric oxygen measuring unit



Electronic pool tester



Mobile diagnostic device for CAN and CAN FD buses



Phase Multimeter



Spectral light meter



System for leak detection in leisure vehicles



Wood moisture measuring device

Customising Options

What do you still need for your own very personal product? We can supply enclosures and tuning knobs with all necessary modifications for fitting your electronic components. Customising options for Datec-Compact



Machining



Lacquering



Printing



Laser marking



Decor foils



EMC shielding



Installation / Assembly of accessories

DATEC-COMPACT

Select Versions



A9005107
DATEC-COMPACT S
ASA+PC (UL 94 V-0)
off-white RAL 9002
136x74x32mm
IP 65



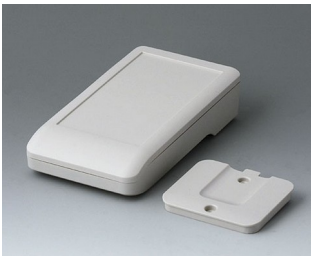
A9005108
DATEC-COMPACT S
ASA+PC (UL 94 V-0)
lava
136x74x32mm
IP 65



A9005117
DATEC-COMPACT S
ASA+PC (UL 94 V-0)
off-white RAL 9002
136x74x32mm
IP 41



A9005118
DATEC-COMPACT S
ASA+PC (UL 94 V-0)
lava
136x74x32mm
IP 41



A9005207
DATEC-COMPACT S
ASA+PC (UL 94 V-0)
off-white RAL 9002
136x74x32mm
IP 65



A9005208
DATEC-COMPACT S
ASA+PC (UL 94 V-0)
lava
136x74x32mm
IP 65



A9005217
DATEC-COMPACT S
ASA+PC (UL 94 V-0)
off-white RAL 9002
136x74x32mm
IP 41



A9005218
DATEC-COMPACT S
ASA+PC (UL 94 V-0)
lava
136x74x32mm
IP 41



A9006107
DATEC-COMPACT M
ASA+PC (UL 94 V-0)
off-white RAL 9002
172x92x39mm
IP 65



A9006108
DATEC-COMPACT M
ASA+PC (UL 94 V-0)
lava
172x92x39mm
IP 65



A9006117
DATEC-COMPACT M
ASA+PC (UL 94 V-0)
off-white RAL 9002
172x92x39mm
IP 41



A9006118
DATEC-COMPACT M
ASA+PC (UL 94 V-0)
lava
172x92x39mm
IP 41



A9006207
DATEC-COMPACT M
ASA+PC (UL 94 V-0)
off-white RAL 9002
172x92x39mm
IP 65



A9006208
DATEC-COMPACT M
ASA+PC (UL 94 V-0)
lava
172x92x39mm
IP 65



A9006217
DATEC-COMPACT M
ASA+PC (UL 94 V-0)
off-white RAL 9002
172x92x39mm
IP 41



A9006218
DATEC-COMPACT M
ASA+PC (UL 94 V-0)
lava
172x92x39mm
IP 41

DATEC-COMPACT



A9007107
DATEC-COMPACT L
ASA+PC (UL 94 V-0)
off-white RAL 9002
206x110x47mm
IP 65



A9007108
DATEC-COMPACT L
ASA+PC (UL 94 V-0)
lava
206x110x47mm
IP 65



A9007117
DATEC-COMPACT L
ASA+PC (UL 94 V-0)
off-white RAL 9002
206x110x47mm
IP 41



A9007118
DATEC-COMPACT L
ASA+PC (UL 94 V-0)
lava
206x110x47mm
IP 41



A9007207
DATEC-COMPACT L
ASA+PC (UL 94 V-0)
off-white RAL 9002
206x110x47mm
IP 65



A9007208
DATEC-COMPACT L
ASA+PC (UL 94 V-0)
lava
206x110x47mm
IP 65



A9007217
DATEC-COMPACT L
ASA+PC (UL 94 V-0)
off-white RAL 9002
206x110x47mm
IP 41



A9007218
DATEC-COMPACT L
ASA+PC (UL 94 V-0)
lava
206x110x47mm
IP 41

Accessory "battery"



A9190023
Set of battery clips, 3 x AA
Steel
nickel-plated



A9190024
Set of battery clips, 3 x AAA
Steel
nickel-plated

Accessory "station"



A9105507
Station S
ASA+PC (UL 94 V-0)
off-white RAL 9002



A9105508
Station S
ASA+PC (UL 94 V-0)
lava



A9106507
Station M
ASA+PC (UL 94 V-0)
off-white RAL 9002



A9106508
Station M
ASA+PC (UL 94 V-0)
lava

DATEC-COMPACT



A9107507
Station L
ASA+PC (UL 94 V-0)
off-white RAL 9002



A9107508
Station L
ASA+PC (UL 94 V-0)
lava



A9193031
Spring contact
gold-plated

Accessory "wall/holder"



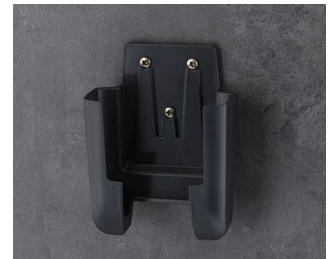
A9105627
Holder S
ASA+PC (UL 94 V-0)
off-white RAL 9002



A9105628
Holder S
ASA+PC (UL 94 V-0)
lava



A9106627
Holder M
ASA+PC (UL 94 V-0)
off-white RAL 9002



A9106628
Holder M
ASA+PC (UL 94 V-0)
lava



A9107627
Holder L
ASA+PC (UL 94 V-0)
off-white RAL 9002



A9107628
Holder L
ASA+PC (UL 94 V-0)
lava

Accessory "screws"



A0305031
Self-tapping screws 2.5 x 6 mm
(PZ1)



A0325060
Self-tapping screw 2.5 x 6 mm
(T8)
Stainless steel



A0399T08
Torx T8 screwdriver



A0399T10
Torx T10 screwdriver

DATEC-COMPACT

Accessory



A9193030
Contact pin
gold-plated



A9207150
Anti-slide feet 6.5 x 2 mm
transparent

Subject to technical modification without notice. © by OKW Gehäusesysteme, Buchen/Germany.