

SOFT-CASE

Wide-format handheld enclosures

SOFT-CASE plastic enclosures convince design engineers, because they correspond with today's design and technology needs.

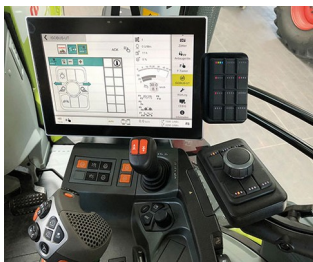
- handy design with soft contours for a pleasant touch sensation
- unique "wide-format" offers a generous interface area as well as sufficient room for larger displays, while also ensuring user comfort
- raised connector mounting panel on the wide edge to accommodate more connections
- universal use for handheld, desktop and wall mount applications
- four sizes
- optional intermediate rings provide more installation height. Different versions: ABS rings in case colour or chromated, soft TPE ring
- with soft TPE ring protection class IP 54 possible (enclosure versions without battery compartment in ABS or PMMA)
- two materials: ABS (UL 94 HB) or PMMA infra-red light-permeable (UL 94 HB)
- without/with battery compartment for 2 x AAA, 2 x AA, 4 x AA or 1 x 9 V;
- clip-on battery compartment lid can be screw fixed
- recessed operating area for protecting the membrane keypad or decorative foil/label
- combi-clip serves as a belt clip and/or wall suspension element (accessory)
- tilt foot bar for ergonomic canting on a desk
- internal fastening pillars for PCBs



SOFT-CASE

Applications and Examples

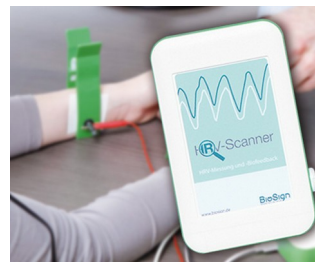
- All types of remote control devices, wireless or with cable
- Measurement and control engineering
- Digital control technology
- Medical and laboratory technology
- Peripheral and interface equipment
- Communications technology
- IoT/IloT
- Environmental engineering
- Energy management



Digital joystick for ISO bus machines



Geiger counter with logging function



HRV scanner for analysing the autonomic nervous system



Module for smart mobility applications



Multimedia audioguide for museums



Real-time localisation in the healthcare sector



Remote control unit for AutoSat satellite receiver



RFID Reader



RIDEwatcher Multimeter for ride profiles



Sensor for measuring carbon dioxide concentration

Customising Options

What do you still need for your own very personal product? We can supply enclosures and tuning knobs with all necessary modifications for fitting your electronic components.
Customising options for Soft-Case

SOFT-CASE



Machining



Lacquering



Printing



Laser marking



Decor foils



Special material



EMC shielding



Installation / Assembly
of accessories

Select Versions



A9050107
SOFT-CASE S
ABS (UL 94 HB)
off-white RAL 9002
51x82x14mm
IP 54 opt., IP 40



A9050108
SOFT-CASE S
ABS (UL 94 HB)
lava
51x82x14mm
IP 54 opt., IP 40



A9050209
SOFT-CASE S
PMMA (IR) (UL 94 HB)
black RAL 9005
51x82x14mm
IP 54 opt., IP 40



A9051107
SOFT-CASE M
ABS (UL 94 HB)
off-white RAL 9002
65x105x19mm
IP 54 opt., IP 40



A9051108
SOFT-CASE M
ABS (UL 94 HB)
lava
65x105x19mm
IP 54 opt., IP 40



A9051117
SOFT-CASE M
ABS (UL 94 HB)
off-white RAL 9002
65x105x19mm
IP 40



A9051118
SOFT-CASE M
ABS (UL 94 HB)
lava
65x105x19mm
IP 40



A9051209
SOFT-CASE M
PMMA (IR) (UL 94 HB)
black RAL 9005
65x105x19mm
IP 54 opt., IP 40

SOFT-CASE



A9051219
SOFT-CASE M
PMMA (IR) (UL 94 HB)
black RAL 9005
65x105x19mm
IP 40



A9052107
SOFT-CASE L
ABS (UL 94 HB)
off-white RAL 9002
73x117x24mm
IP 54 opt., IP 40



A9052108
SOFT-CASE L
ABS (UL 94 HB)
lava
73x117x24mm
IP 54 opt., IP 40



A9052117
SOFT-CASE L
ABS (UL 94 HB)
off-white RAL 9002
73x117x24mm
IP 40



A9052118
SOFT-CASE L
ABS (UL 94 HB)
lava
73x117x24mm
IP 40



A9052127
SOFT-CASE L
ABS (UL 94 HB)
off-white RAL 9002
73x117x24mm
IP 40



A9052128
SOFT-CASE L
ABS (UL 94 HB)
lava
73x117x24mm
IP 40



A9052209
SOFT-CASE L
PMMA (IR) (UL 94 HB)
black RAL 9005
73x117x24mm
IP 54 opt., IP 40



A9052219
SOFT-CASE L
PMMA (IR) (UL 94 HB)
black RAL 9005
73x117x24mm
IP 40



A9052229
SOFT-CASE L
PMMA (IR) (UL 94 HB)
black RAL 9005
73x117x24mm
IP 40



A9053107
SOFT-CASE XL
ABS (UL 94 HB)
off-white RAL 9002
92x150x28mm
IP 40



A9053108
SOFT-CASE XL
ABS (UL 94 HB)
lava
92x150x28mm
IP 40



A9053117
SOFT-CASE XL
ABS (UL 94 HB)
off-white RAL 9002
92x150x28mm
IP 40



A9053118
SOFT-CASE XL
ABS (UL 94 HB)
lava
92x150x28mm
IP 40



A9053209
SOFT-CASE XL
PMMA (IR) (UL 94 HB)
black RAL 9005
92x150x28mm
IP 40



A9053219
SOFT-CASE XL
PMMA (IR) (UL 94 HB)
black RAL 9005
92x150x28mm
IP 40

SOFT-CASE

Accessory "intermediate ring"



A9150011
Intermediate ring S
ABS (UL 94 HB)
matt chromed
54x85x12mm



A9150017
Intermediate ring S
ABS (UL 94 HB)
off-white RAL 9002
54x85x12mm



A9150018
Intermediate ring S
ABS (UL 94 HB)
lava
54x85x12mm



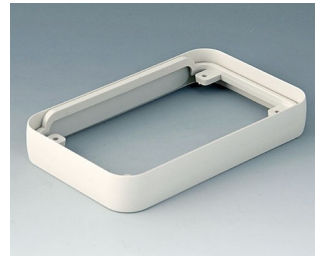
A9150118
Intermediate protection ring S
SEBS (TPE)
volcano
54x85x12mm



A9150219
Intermediate ring S
PMMA (IR) (UL 94 HB)
black RAL 9005
54x85x12mm



A9151011
Intermediate ring M
ABS (UL 94 HB)
matt chromed
68x108x16mm



A9151017
Intermediate ring M
ABS (UL 94 HB)
off-white RAL 9002
68x108x16mm



A9151018
Intermediate ring M
ABS (UL 94 HB)
lava
68x108x16mm



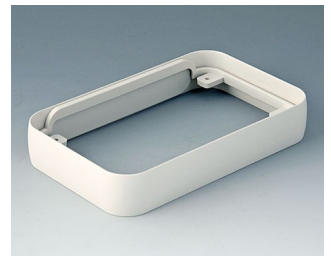
A9151118
Intermediate protection ring M
SEBS (TPE)
volcano
68x108x16mm



A9152129
Intermediate ring M
PMMA (IR) (UL 94 HB)
black RAL 9005
68x108x16mm



A9152011
Intermediate ring L
ABS (UL 94 HB)
matt chromed
76x120x21mm



A9152017
Intermediate ring L
ABS (UL 94 HB)
off-white RAL 9002
76x120x21mm



A9152018
Intermediate ring L
ABS (UL 94 HB)
lava
76x120x21mm



A9152118
Intermediate protection ring L
SEBS (TPE)
volcano
76x120x21mm



A9152219
Intermediate ring L
PMMA (IR) (UL 94 HB)
black RAL 9005
76x120x21mm



A9153011
Intermediate ring XL
ABS (UL 94 HB)
matt chromed
96x154x26mm

SOFT-CASE



A9153017
Intermediate ring XL
ABS (UL 94 HB)
off-white RAL 9002
96x154x26mm



A9153018
Intermediate ring XL
ABS (UL 94 HB)
lava
96x154x26mm



A9153118
Intermediate ring XL
SEBS (TPE)
volcano
96x154x26mm



A9153219
Intermediate ring XL
PMMA (IR) (UL 94 HB)
black RAL 9005
96x154x26mm

Accessory "battery"



A9151010
Set of battery clips, 2 x AAA
Steel
nickel-plated



A9152010
Set of battery clips, 2/4 x AA
Steel
nickel-plated



A9174006
Set of battery clips, 1 x 9 V
Steel
tin-plated

Accessory "wall/holder"



A9152047
Combi-Clip
ABS (UL 94 HB)
off-white RAL 9002
45x27mm



A9152048
Combi-Clip
ABS (UL 94 HB)
lava
45x27mm



A9152049
Combi-Clip
ABS (UL 94 HB)
black RAL 9005
45x27mm

Accessory "carrying"



A9100001
Ring eyelet
PA 6
volcano



A9100002
Ring eyelet
PA 6
volcano



A9152047
Combi-Clip
ABS (UL 94 HB)
off-white RAL 9002
45x27mm



A9152048
Combi-Clip
ABS (UL 94 HB)
lava
45x27mm

SOFT-CASE



A9152049
 Combi-Clip
 ABS (UL 94 HB)
 black RAL 9005
 45x27mm



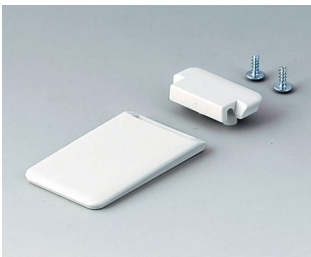
B9106128
 Strap eyelet
 ABS (UL 94 HB)
 lava

Accessory "screws"



A0304031
 Self-tapping screws 2.2 x 5 mm
 (PZ1)

Accessory



A9152057
 Tilt foot bar
 ABS (UL 94 HB)
 off-white RAL 9002



A9152058
 Tilt foot bar
 ABS (UL 94 HB)
 lava



A9152059
 Tilt foot bar
 ABS (UL 94 HB)
 black RAL 9005

Subject to technical modification without notice. © by OKW Gehäusesysteme, Buchen/Germany.