

# DATEC-TERMINAL

## Modular plastic enclosures for data collection equipment

DATEC-TERMINAL is a tough and attractive housing system uniquely designed to meet the requirements of desktop and wall mounted data collection equipment.

- ergonomic terminal enclosures
- operating area inclined by 20°
- for desktop or wall mounted systems
- rear lids for mounting of standard pocket-size scanners
- four sizes and two types
- sizes M & L with separate terminal section which is easily accessible
- fast assembly and easy access for components
- hidden screw fixing
- wide range of accessories, functional and flexible to use
- protection class IP 54 in combination with cover and closed lid
- hidden wall mounting with removal prevention
- internal fastening pillars for PCBs 100 x 160 mm or double eurocard sizes (S, SL and L)
- plain surfaces for individual machining and interfaces
- recessed operating area for protecting a membrane keypad



# DATEC-TERMINAL

## Applications and Examples

- Systems for data collection on the job and machines
- Access and security controls
- Measuring and controlling
- Heating and air-conditioning units
- Medical, wellness
- Point-of-sale devices



Dental Whitening and laser therapy



Device for monitoring and controlling distillation units



RFID access control readers



System for preventing electrostatic charges



Terminal for time recording, access control and order management



Versatile terminal for leisure facilities

## Customising Options

What do you still need for your own very personal product? We can supply enclosures and tuning knobs with all necessary modifications for fitting your electronic components.

Customising options for Datec-Terminal



Machining



Lacquering



Printing



Laser marking



Decor foils



Special material



EMC shielding



Installation / Assembly of accessories

# DATEC-TERMINAL

## Select Versions



**B4013117**  
DATEC-TERMINAL S  
ABS (UL 94 HB)  
off-white RAL 9002  
130x180x86mm  
IP 54 opt.



**B4016117**  
DATEC-TERMINAL M, Vers. I  
ABS (UL 94 HB)  
off-white RAL 9002  
168x272x101mm  
IP 54 opt.



**B4016217**  
DATEC-TERMINAL M, Vers. II  
ABS (UL 94 HB)  
off-white RAL 9002  
168x272x101mm  
IP 54 opt.



**B4016317**  
DATEC-TERMINAL M, Vers. III  
ABS (UL 94 HB)  
off-white RAL 9002  
168x272x101mm  
IP 54 opt.



**B4026117**  
DATEC-TERMINAL SL  
ABS (UL 94 HB)  
off-white RAL 9002  
264x180x86mm  
IP 54 opt.



**B4030117**  
DATEC-TERMINAL L, Vers. I  
ABS (UL 94 HB)  
off-white RAL 9002  
302x272x101mm  
IP 54 opt.

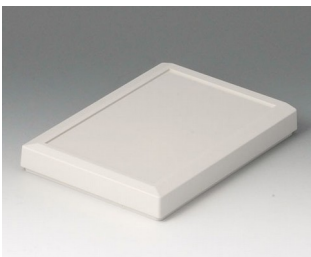


**B4030217**  
DATEC-TERMINAL L, Vers. II  
ABS (UL 94 HB)  
off-white RAL 9002  
302x272x101mm  
IP 54 opt.

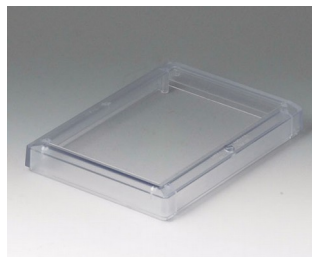


**B4030317**  
DATEC-TERMINAL L, Vers. III  
ABS (UL 94 HB)  
off-white RAL 9002  
302x272x101mm  
IP 54 opt.

## Accessory to complete



**B4013617**  
Cover S  
ABS (UL 94 HB)  
off-white RAL 9002  
130x180x23mm



**B4013621**  
Cover S  
PC (UL 94 V-0)  
transparent  
130x180x23mm



**B4013637**  
Cover S, convex  
ABS (UL 94 HB)  
off-white RAL 9002  
130x180x28mm



**B4016417**  
Lid M closed, flat  
ABS (UL 94 HB)  
off-white RAL 9002  
134x62x24mm



# DATEC-TERMINAL



**B4016457**  
Lid M closed, high  
ABS (UL 94 HB)  
off-white RAL 9002  
134x67x38mm



**B4016617**  
Cover M, flat  
ABS (UL 94 HB)  
off-white RAL 9002  
168x220x29mm



**B4016621**  
Cover M, flat  
PC (UL 94 V-0)  
transparent  
168x220x29mm



**B4016631**  
Cover M, convex  
PC (UL 94 V-0)  
transparent  
168x220x29mm



**B4016637**  
Cover M, convex  
ABS (UL 94 HB)  
off-white RAL 9002  
168x220x29mm



**B4016657**  
Cover M, high  
ABS (UL 94 HB)  
off-white RAL 9002  
168x220x50mm



**B4016671**  
Cover strip M / L  
PC (UL 94 V-0)  
transparent



**B4016677**  
Cover strip M / L  
ABS (UL 94 HB)  
off-white RAL 9002



**B4016917**  
Lid M with card slot, one piece  
ABS (UL 94 HB)  
off-white RAL 9002  
134x67x38mm



**B4026617**  
Cover SL  
ABS (UL 94 HB)  
off-white RAL 9002  
264x180x23mm



**B4026621**  
Cover SL  
PC (UL 94 V-0)  
transparent  
264x180x23mm



**B4026637**  
Cover SL, convex  
ABS (UL 94 HB)  
off-white RAL 9002  
263x180x28mm



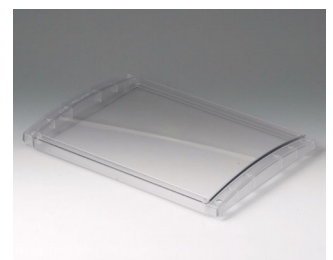
**B4030417**  
Lid L closed, flat  
ABS (UL 94 HB)  
off-white RAL 9002  
268x62x24mm



**B4030617**  
Cover L, flat  
ABS (UL 94 HB)  
off-white RAL 9002  
302x220x29mm



**B4030621**  
Cover L, flat  
PC (UL 94 V-0)  
transparent  
302x220x29mm



**B4030631**  
Cover L, convex  
PC (UL 94 V-0)  
transparent  
302x220x29mm

# DATEC-TERMINAL



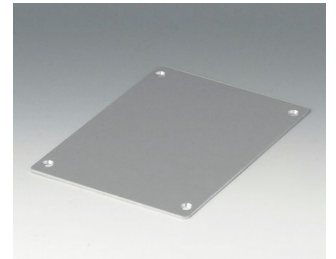
**B4030637**  
Cover L, convex  
ABS (UL 94 HB)  
off-white RAL 9002  
302x220x29mm



**B4030657**  
Cover L, high  
ABS (UL 94 HB)  
off-white RAL 9002  
302x220x50mm



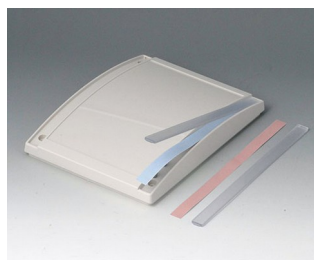
**B4030917**  
Lid L with card slot, one piece  
ABS (UL 94 HB)  
off-white RAL 9002  
268x67x38mm



**B4113106**  
Front panel S  
Aluminium  
matt anodised  
125.9x176x2mm



**B4113126**  
Profile plate S  
Aluminium  
matt anodised  
130x180x8mm



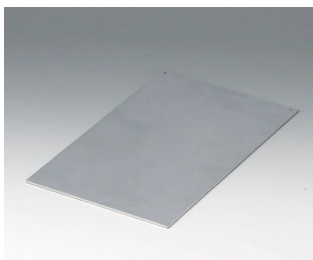
**B4113671**  
Cover strip S / SL  
PC (UL 94 V-0)  
transparent



**B4113677**  
Cover strip S / SL  
ABS (UL 94 HB)  
off-white RAL 9002



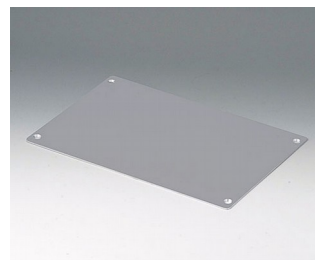
**B4116106**  
Front panel MS  
Aluminium  
matt anodised  
165.4x217.4x2mm



**B4116116**  
Front panel MH  
Aluminium  
matt anodised  
128x209x2mm



**B4116126**  
Profile plate M  
Aluminium  
matt anodised  
168x220x8mm



**B4126106**  
Front panel SL  
Aluminium  
matt anodised  
259.4x176x2mm



**B4126126**  
Profile plate SL  
Aluminium  
matt anodised  
263x180x8mm



**B4130106**  
Front panel LS  
Aluminium  
matt anodised  
299.4x217.4x2mm



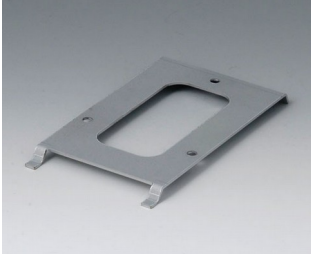
**B4130116**  
Front panel LH  
Aluminium  
matt anodised  
262x209x2mm



**B4130126**  
Profile plate L  
Aluminium  
matt anodised  
302x220x8mm

# DATEC-TERMINAL

## Accessory "wall/holder"



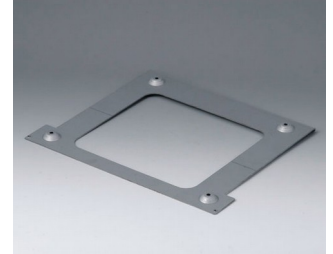
**B4113147**  
Wall suspension element S  
Steel  
galvanized  
79x137x8mm



**B4116147**  
Wall suspension element M  
Steel  
galvanized  
214x126x12mm

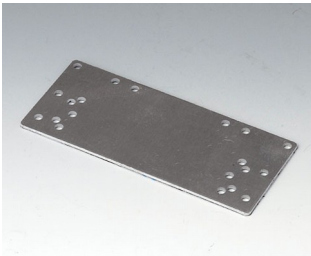


**B4126147**  
Wall suspension element SL  
Steel  
galvanized  
210x137x8mm



**B4130147**  
Wall suspension element L  
Steel  
galvanized  
214x260x12mm

## Accessory



**B4116136**  
Support plate L and M  
Aluminium  
matt anodised  
102x45x1mm

Subject to technical modification without notice. © by OKW Gehäusesysteme, Buchen/Germany.